

SPECIFICATION SHEET

Hand Protection



KOSTO
BUILT STRONG • BÂTI SOLIDE

Cut-Resistant (A6) HPPE Lined Latex-Coated Gloves

MKVH26

Description

This cut-resistant, lined Kosto work glove is made from 13g HPPE and lined with 10g acrylic. It offers ANSI level A6 cut protection, level 3 abrasion resistance and level 4 tear resistance. It's fully coated with waterproof latex, and features a sandblasted palm and fingers for a secure grip. Its elasticated wrist prevents debris from entering the glove. This work glove is touchscreen compatible and ideal for working in winter or cold environments.

Certification

ANSI/ISEA 105-2016 tested
Cut resistance **Level A6 –3950g.**

EN 388:2016+A1:2018 tested
Tear resistance **Level 4**

Abrasion resistance **Level 3**

EN 511: 2006 tested

Cold contact **Level 3**

EN 407:2020 tested

Hot contact: **Level 2**

Materiel

- Seamless 13g HPPE backing
- 10g acrylic inner lining
- Palm and fingers coated with sandblasted latex foam
- Waterproof latex-coated hand

Size

S to 3XL



EN 388:2016
+A1:2018



3X42FX

ANSI-ISEA
105:2016



CUT

EN 511:2006



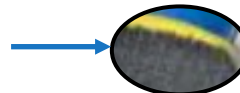
X3X

EN407:2020



X2XXXX

10g acrylic lining with
level 3 cold contact



Waterproof
latex
coating



SPECIFICATION SHEET

Hand Protection



KOSTO
BUILT STRONG • BÂTI SOLIDE

Related Products

Cut resistant glove
MKV106
Level A6 cut protection



Unlined Latex Glove
MKC180



Cut resistant glove
MKGV25
Level A5 cut resistant



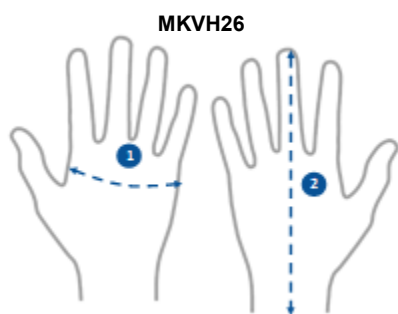
Care and washing instructions

A good way to keep gloves longer is to clean them regularly.

- Low heat wash and tumble dry
- The glove can be washed several times without losing its properties



Sizing Chart



Size Kosto *			S	M	L	XL	2XL	3XL
1	Width (hand)	cm	10.5	11	11.5	12	12.5	13
		po / in	4.1	4.3	4.5	4.7	4.9	5.1
2	Length (glove)	cm	25	26	27	28	29	30
		po / in	9.8	10.2	10.6	11	11.4	11.8

* The measurements are those of the product.

* A fitting is always recommended.